



## All Just a Click Away

### Web Remote Access Broadband Application

An enhanced service for your 2Wire intelligent gateway.  
The fast, easy, and secure way to access your network files  
from any Web browser.

Visit us on the Web  
at [2Wire.com](http://2Wire.com) for a  
complete catalog  
of our products,  
applications, and  
services.

#### **Access Your Network from Anywhere**

Web Remote Access is available as a broadband application for the HomePortal® residential gateway and OfficePortal™ broadband router. Web Remote Access gives you fast, easy access to your home or small office network using a standard Web browser. Download your files securely from anywhere. All you need is an Internet connection and your network password.

#### **Share Files with Friends & Family**

Extend local file sharing so that anyone with an Internet connection and the proper permissions can access desired files.

#### **Manage Your Network**

View and manage all of your network settings and logs including those for other 2Wire® broadband applications such as Parental Controls and Firewall Monitor.

#### **Maximum Security**

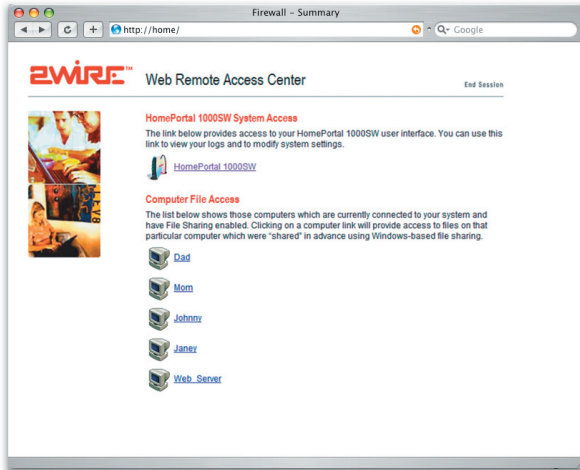
The connection from the remote browser to the 2Wire gateway is secured using Secure Sockets Layer technology (SSL). Remote users login using a special Web page that displays links to available computers and files. To access private resources, visitors must enter the pre-defined authentication information for the computer/file which is being accessed.

#### **Create Your Own Domain Name**

Web Remote Access includes a 2Wire Dynamic Domain Name (DDN) for easy access to your local network using a standard Web browser and Internet connection. Instead of having to type in an IP address, you will use your own DDN such as `pat.accessmyhome.net`



## Web Remote Access Center



Once subscribed to the Web Remote Access application, the subscriber's intelligent gateway hosts a new Remote Access Center. The Remote Access Center includes a series of Web pages that are accessible over the public Internet to allow the remote user to log into their local network securely to access shared resources using the standard Web based user interface. Before being able to log in over the Web remotely, the gateway owner must setup a Remote Access password. This password will be used to authenticate Internet users and allow them into the Remote Access Center.

### Block After Unsuccessful Attempts

You may choose to block Web Remote Access for a period of time protecting against someone without proper access attempting to connect to the 2Wire gateway managed network. You define the number of attempts before lockout as well as the length of the lockout.

### Remote Management

Beyond file sharing, Web Remote Access also allows the subscriber to access their 2Wire intelligent gateway Web based user interface. Authorized users can then monitor and manage the gateway remotely over the Internet. This functionality is increasingly powerful for interacting with other 2Wire broadband applications like Parental Controls and Firewall Monitor. Users have the ability to monitor their children's Internet usage, change Parental Controls and firewall settings, and view detailed logs.

### Personal Dynamic Domain Name

In order to make it easier for subscribers to reach their local network over the Internet, 2Wire also provides an Internet naming service. This service allows users to type a simple Web URL name to reach their gateway (e.g. <http://myname.accessmyhome.net>). 2Wire hosts this service as part of the Web Remote Access application, and allows users to choose an unused name to combine with the 2Wire [accessmyhome.net](http://accessmyhome.net) domain.

This particular feature is important because most consumer Internet connections today are configured for Dynamic IP address allocation (frequently changing IP address) making the gateway unreachable if the IP address has changed since the user last recorded it. The 2Wire Dynamic Domain Name service keeps track of the user's gateway address and updates the Domain registries so that when remote users type the domain name, 2Wire automatically forwards them to the current IP address of the gateway.

## Technical Specifications

### Compatible CPE Platforms

This broadband application is available on any 2Wire intelligent gateway model, running software version 3.0 or higher.

### Computer Requirements

Any computer that meets the minimum requirements for connecting to a 2Wire intelligent gateway network will be able to take advantage of this application. Windows 98, 98SE, NT 4.0, 2000, ME, XP or Mac OS 8.65 or higher  
Web Browser: Netscape 4.7x, Microsoft Internet Explorer 5.0 or higher.

## More 2Wire Broadband Applications

### Firewall Monitor

Keep your home or office secure with automatic firewall updates. Receive notification of attacks and view detailed logs through the 2Wire intelligent gateway's user interface. Because the firewall resides on the gateway, every device on the network is automatically protected by the latest firewall updates.



### Parental Controls

Content Screening and Internet Access Control help you protect and manage your child's online experience. Prevent children from accessing specific Websites or categories of content. Set Internet access and application schedules for every device on the network. Monitor Parental Control logs and manage settings from the gateways simple user interface.



For more information on all the broadband applications offered by 2Wire, visit [www.2Wire.com](http://www.2Wire.com).

Features and specifications are subject to change. © 2004 2Wire, Inc. 2Wire, the 2Wire logo design, and HomePortal are registered trademarks of 2Wire, Inc. OfficePortal, MediaPortal, HyperG and Greenlight are trademarks of 2Wire, Inc. All rights reserved. Patent Pending. 5100-000270-000 Rev B 12/04